

## A465 - Clydach Footbridge Demolition

|                     |  |
|---------------------|--|
| <b>PROJECT:</b>     | A465 Head of the Valleys Section 2 - Clydach Footbridge Demolition   |
| <b>CLIENT:</b>      | Costain  |
| <b>VALUE:</b>       | £50,000  |
| <b>AT-A-GLANCE:</b> | Demolition sequence design<br>Possession work<br>Structural Demolition<br>Bridge structure<br>Carriageway protection |



### PROJECT OUTLINE

As part of the A465 Heads of the Valley dual carriageway upgrade between Brynmawr and Gilwern in South Wales, the aging reinforced concrete Clydach Footbridge was deemed surplus to requirements and in need of demolition to allow realignment of the new road. Costain appointed Walters to undertake the demolition works to a predetermined sequence during a 24hr road closure of the A465

### PROJECT DELIVERY

Walters engaged with a trusted specialist temporary works design partner, to study historical records of the bridge construction and jointly develop a safe demolition sequence. Once finalised, the demolition sequence was submitted to Costain for review and independent design checking.

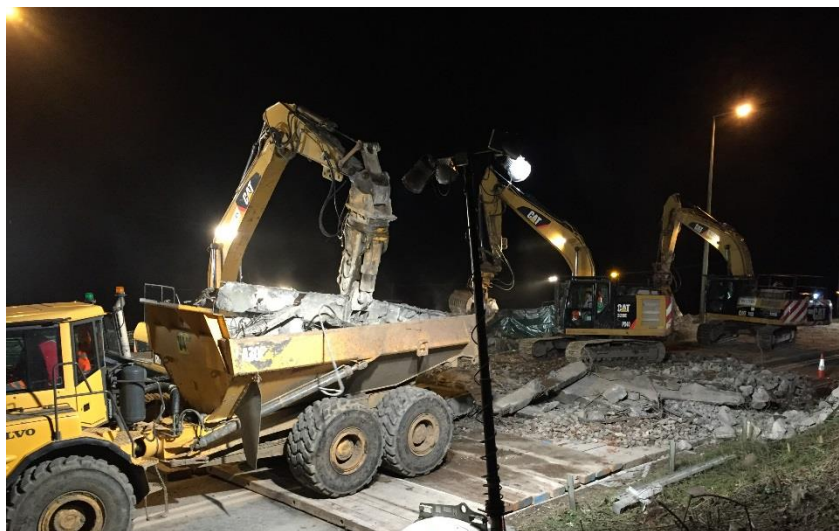
## A465 - Clydach Footbridge Demolition



**SPECIALIST DEMOLITION MACHINERY**  
Walters undertook the removal of the bridge using a combination of demolition specific machines and attachments during a 24hr road closure of the A465 Heads of the Valley road.

### THE DEMOLITION PROCESS

During the road closure, Walters installed a bespoke timber mat and stone carriageway protection system to allow company owned, specialist demolition plant and equipment access onto the carriageway to demolish the bridge. All arisings from the demolition were removed from the carriageway protection deck to local storage areas by articulated dump trucks. Once the 'on-road' phase of the work was completed, Walters removed all rubble and steel arisings from site to allow the road to re-open.



### SUCCESSFUL DELIVERY

The works were completed safely within the allotted road closure period and the road was successfully re-opened to traffic as scheduled.